

Wellington Academy Clermont

March 2024 Newsletter



Director:

Carole Kirby

1380 N Ridge Blvd

Clermont FL 34711

Phone:

352-242-9512

Fax:

352-243-2060

Open Monday - Friday

7:30 AM - 5:30 PM

Website:

Wellingtonacademyschools.com

Email:

Clermont@wellingtonacademyschools.com

Admin News:

Greetings as we step into the month of March! I wanted to take a moment to appreciate each of you for being an integral part of the Wellington community.

Our school thrives because of the diverse perspectives, experiences, and support that each family brings. Whether you're new to Wellington or have been with us for a while, your presence is what makes our school special.

Thank you for entrusting us with the education and well-being of your children. Your partnership is crucial in creating a positive and nurturing environment. If you ever have thoughts or suggestions, I'm here to listen.

Wishing you a March filled with continued connections, growth, and moments of joy.

Warm regards,



DATES TO REMEMER:

March 10th - Daylight Savings

March 17th - St. Patrick's Day

March 19th - First Day of Spring

March 29th - In-Service Day (Wellington Closed)

March 31st - Easter

March 2024
Classroom News

Developmental Infants & Ones

As we step into the month of March, I want to express my heartfelt gratitude for entrusting us with your precious infants. Witnessing their growth and milestones is a daily joy. Your support is invaluable as we create a loving and nurturing environment. Feel free to reach out anytime. Looking forward to more shared moments of joy throughout March.

Love, Ms. Moya

Developmental 2A

Happy March! I'm excited to share the upcoming learning adventures with your wonderful children. This month, our focus will be on letters R and E, numbers 15 and 16, the enchanting shape of a star, and the color black. Get ready for a month filled with exploration and growth!

Love, Ms. Jalynn

Developmental 3A & 4A

March brings exciting new adventures in learning for our class! This month, your children will be diving into the world of letters R and E, exploring numbers 15 and 16, discovering the unique shape of a star, and exploring the colors black and green.

We encourage you to engage in these discoveries at home, sparking conversations and activities that reinforce what they are learning in the classroom. Your support is invaluable in creating a rich learning environment.

As always, if you have any questions or if there's anything you'd like to share, feel free to connect. Here's to a month of colorful and educational exploration!

Love, Mrs. Candance & Mrs. Cassandra



JUST A LITTLE *Reminder*

If your child is in attendance Monday and payment has not been made by Monday @ 6PM. On Tuesday **morning** you will receive a \$40.00 late fee.

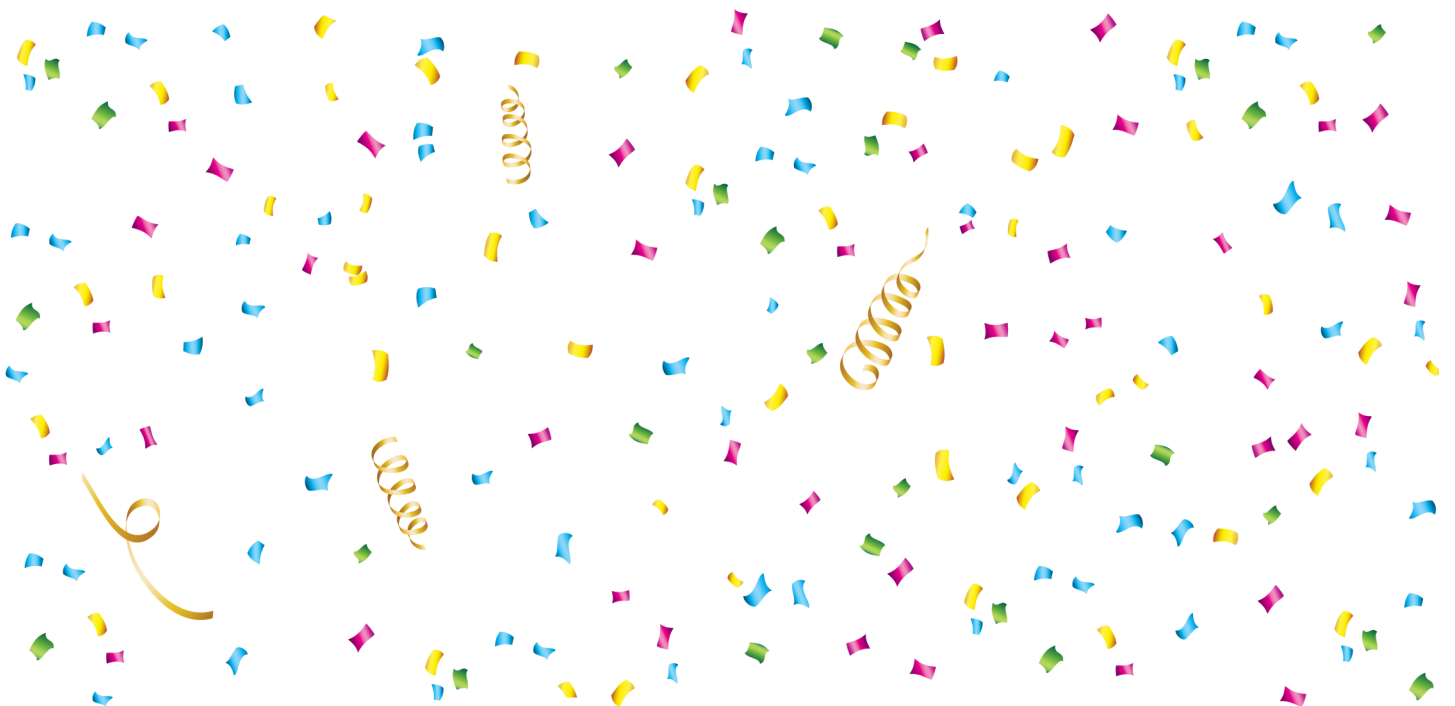
****You pay for their spot, not their attendance.**

HAPPY BIRTHDAY!

Kameron - March 18th

Kenneth - March 18th

Aurelia - March 29th



Reminder:

Wellington Academy is CLOSED

March 29th

for In-Service Day

March 2024

D1: Whole Milk

D2 & Up: 1% Milk

March 4th – 8th

MENU	Monday	Tuesday	Wednesday	Thursday	Friday
Breakfast	Cheerios, Pineapple, Milk	WG English Muffin w/ Jelly, Peaches, Milk	Mini Blueberry Muffins, Pears, Milk	Bagels w/ Cream Cheese, Pears, Milk	Pancake, Sausage, Mixed Fruit, Milk
Lunch	WG Chicken Nuggets, Green Beans, Orange Wedges, Milk	Cheesy Chicken Rice w/ Broccoli, Mixed Fruit, Milk	Chicken & Cheese Quesadilla on WG Tortilla, Peas, Pears, Milk	Spaghetti Bolognese, Salad w/ Ranch Dressing, Peaches, Milk	Turkey & Cheese on WG Bread, Carrots, Pineapples, Milk
Snack	Cheez-Its, Peaches, Water	Animal Crackers, Grapes, Water	Cheese Sticks, Pineapple, Water	Graham Crackers, Sun butter, Water	WG Ritz Crackers w/ Cheese, Water

March 11th - 15th

MENU	Monday	Tuesday	Wednesday	Thursday	Friday
Breakfast	Breakfast Biscuits w/ Cheese, Applesauce, Milk	WG Waffles, Orange Wedges, Milk	WG Kix Cereal, Bananas, Milk	WG English Muffin w/ Jelly, Peaches, Milk	WG French Toast, Pineapples, Milk
Lunch	WG Cheeseburger Mac & Cheese, Carrots, Mandarin Oranges, Milk	Sun Butter & Jelly Sandwiches on WG Bread, Corn, Mixed Fruit, Milk	WG Homemade Beef-a-Roni, Green Beans, Peaches, Milk	Beef Hot Dog on WG Bun, Mashed Potatoes, Peas, Cinnamon Apples, Milk	Pizza, Green Beans, Pears, Milk
Snack	Strawberry Yogurt, Mixed Fruit, Water	Chex Mix, Pineapples, Water	Turkey w/ WG Ritz Crackers, Water	Pretzels, Watermelon, Water	Animal Crackers, Peaches, Water

March 18th - 22rd

MENU	Monday	Tuesday	Wednesday	Thursday	Friday
Breakfast	Cheerios, Mixed Fruit, Milk	Pancakes, Sausage, Pineapples, Milk	WG French Toast Sticks, Banana, Milk	WG Kix Cereal, Peaches, Milk	WG Waffles, Pears, Milk
Lunch	Teriyaki Chicken w Brown Rice, Peas, Peaches, Milk	Fish Sticks, Mashed Potatoes, Pears, Milk	Italian Sub, Salad w Ranch Dressing, Pineapples, Milk	Chicken Nuggets, Green Beans, Mandarin Oranges, Milk	Chicken and Cheese Quesadilla on WG Tortilla, Spanish Rice, Corn, Milk
Snack	Ham w/ WG Ritz Crackers, Water	Animal Crackers, Orange Wedges, Water	Strawberry Yogurt, Pears, Water	Cheez-itz, Pineapple, Water	Apple Slices, Sun Butter, Water

March 25th - 29th

Breakfast	WG French Toast, Pineapples, Milk	Mini Blueberry Muffins, sliced apples, milk	Bagels w/ Cream Cheese, Orange Wedges, Milk	Ham & Cheese on WG Tortilla, Peaches, Milk	Chex Cereal, Pears, Milk
Lunch	Chicken Alfredo w Broccoli, Peaches, Milk	Grilled Ham & Cheese on wg Bread, Peas, Pears, Milk	Beef Hot Dog w/ WG Bun, Baked Beans, Mixed Fruit, Milk	WG Mac & Cheese, Carrots, Cinnamon Apples, Milk	Pizza, Corn, Mixed Fruit, Milk
Snack	Chex Mix, Pineapple, Water	WG Ritz Crackers w/ Cheese, Peaches, Water	Graham Crackers, Sun Butter, Water	WG Goldfish, 100% Apple Juice	Pretzels, Grapes, Water